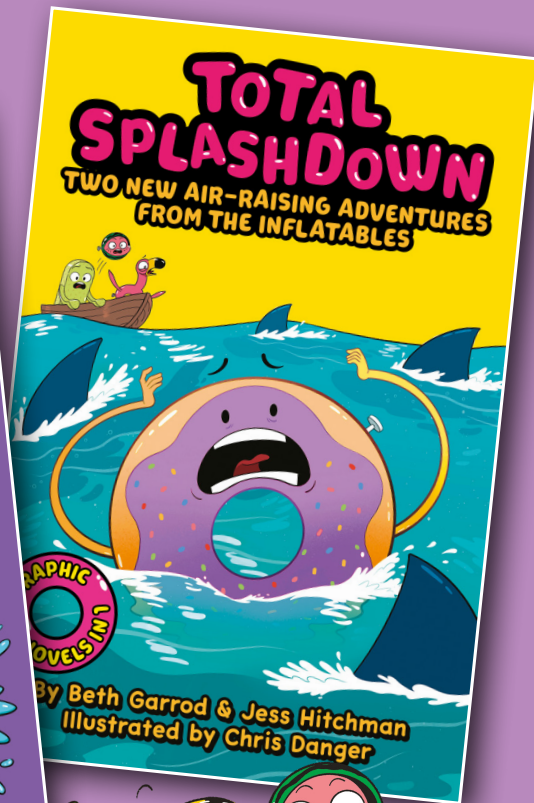
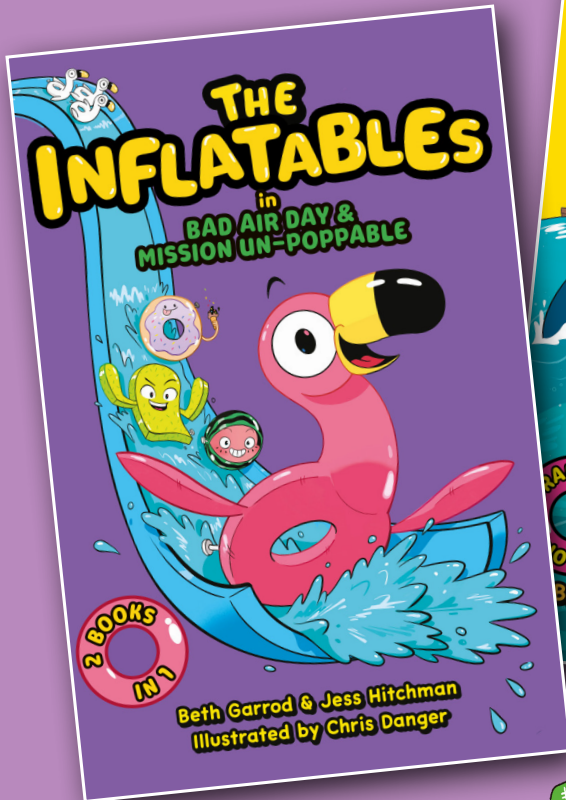


# THE INFLATABLES

## ACTIVITY PACK



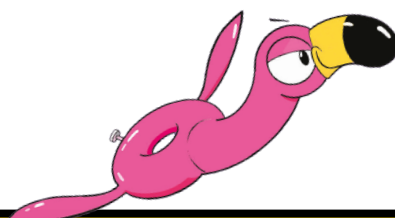
## WORD SEARCH

Can you find the eight words hidden in the wordsearch below?



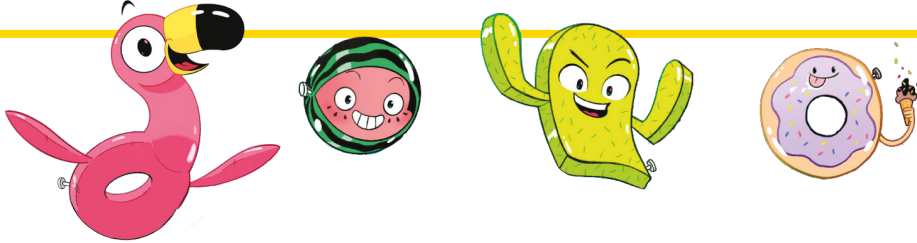
R	B	D	O	N	U	T	U	W	V	U	K	Y	P	N
S	V	A	T	P	K	A	F	L	A	M	I	N	G	O
H	A	P	D	H	R	F	D	Q	N	B	B	U	H	L
M	I	N	D	W	C	C	J	S	L	E	D	J	P	E
F	F	E	B	W	J	L	K	E	O	X	E	A	G	M
U	O	Y	X	S	U	N	Y	L	V	Z	A	Z	J	R
F	E	A	Y	U	U	Z	E	B	U	Q	M	Z	Y	E
K	Y	R	J	P	T	T	A	A	D	L	U	I	A	T
F	B	P	P	Y	V	A	C	T	M	D	V	P	F	A
V	D	S	O	H	C	H	F	A	F	W	R	P	J	W
E	T	G	P	K	C	Y	Z	L	C	A	R	Y	Y	X
U	M	C	C	A	Q	R	G	F	J	F	V	B	U	R
V	V	A	O	A	J	D	E	N	C	V	X	O	J	I
C	U	Y	R	L	M	S	A	I	H	F	Q	W	P	L
Z	J	A	N	Z	H	O	C	J	I	M	M	V	Z	X

Donut • Popcorn • Flamingo  
Cactus • Pizza • Watermelon  
Spray • Inflatables



# DESIGN YOUR OWN INFLATABLE!

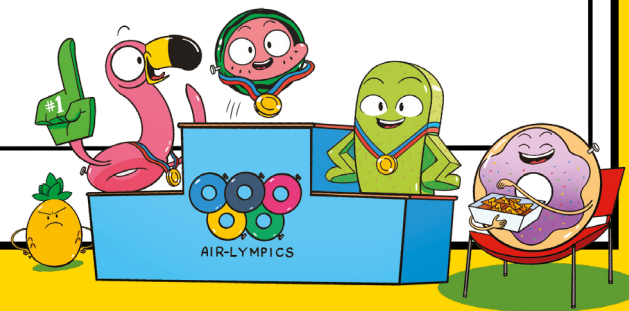
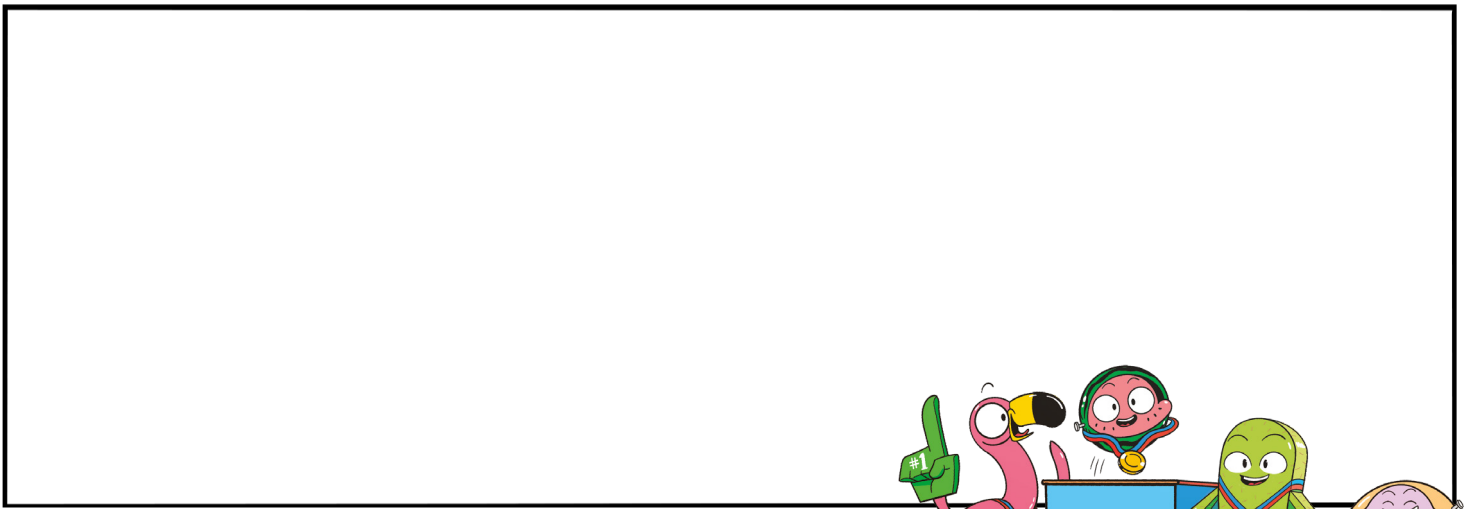
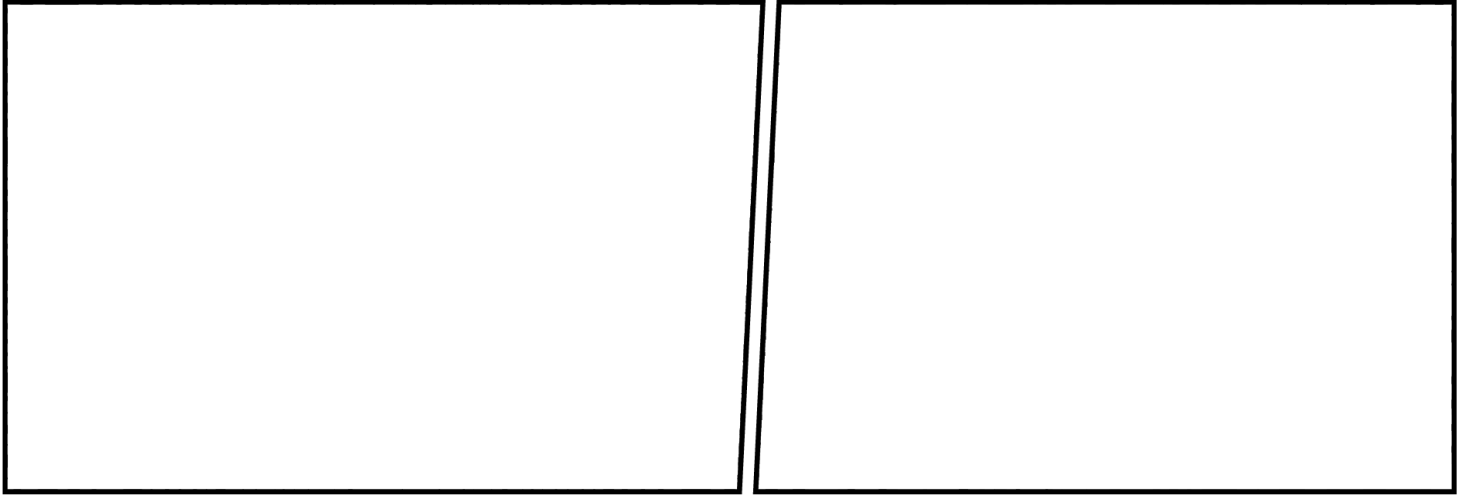
In *The Inflatables*, we meet bouncy BFFs Cactus, Flamingo, Donut, and Watermelon who all live at the *Have a Great Spray* waterpark. Use the space below to imagine a NEW inflatable to join the crew! What will they look like, and what will their name be?



A large, empty rectangular box with a yellow border, intended for drawing a new inflatable character.

# CREATE YOUR OWN COMIC STRIP

Now that you've created your own brand-new Inflatable character, imagine the moment that they arrive at the Have a Great Spray waterpark and meet the rest of the gang. Use the four boxes below to create your own comic strip for this scene. How would the characters interact? What funny things would they get up to?



# COLOURING IN



Below is an image of the Have a Great Spray waterpark,  
Colour the scene in, with as much detail as you can.  
It's a bright sunny day at Have a Great Spray!

