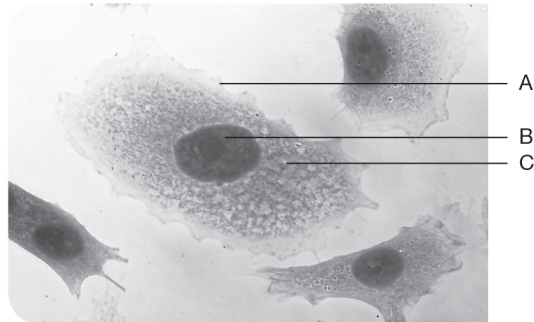


Eukaryotes and prokaryotes

① The figure shows an animal cell viewed under a microscope.



a Which label is:

- the nucleus?
- the cytoplasm? (2 marks, ★)

b Name **two** ways in which this cell is different to a prokaryotic cell. (2 marks, ★★)

- 1
- 2

c The central cell is 1.2 mm wide. Calculate the width of the cell in micrometres (μm). Show your working. (2 marks, ★★★)

..... μm

NAILIT!

Remember there are 1000 μm in 1 mm.

d A prokaryotic cell is 10 μm in diameter. A white blood cell is 60 times bigger. Calculate the diameter of the white blood cell. Tick **one** box. (1 mark, ★★★)

60 000 nm	<input type="checkbox"/>
6000 μm	<input type="checkbox"/>
60 mm	<input type="checkbox"/>
0.6 mm	<input type="checkbox"/>