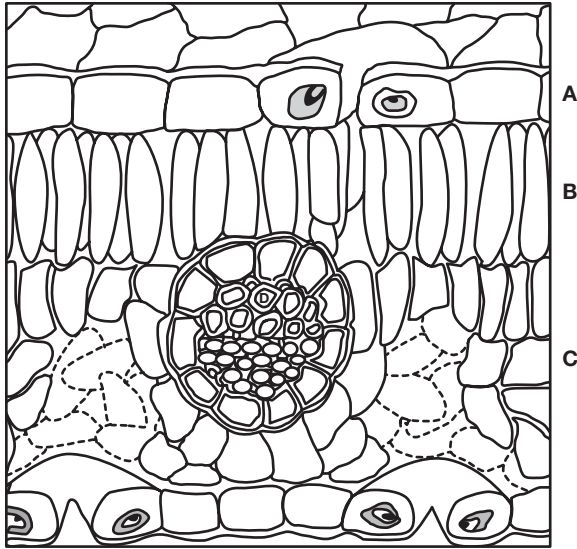


Tissues, organs and organ systems

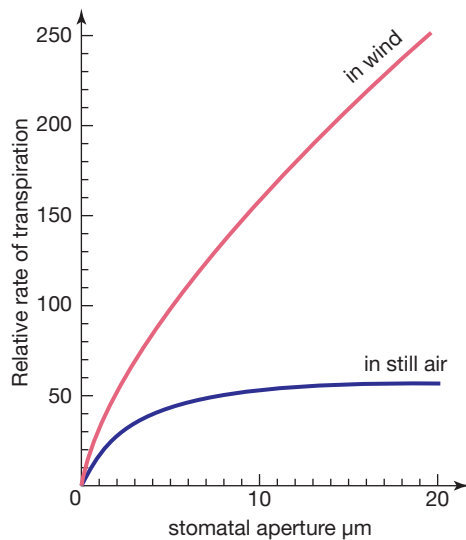
REVIEW IT!

- 1 a The plant tissues of the leaf are shown on the diagram below:



Describe how tissue B is adapted for its function.

- b The graph below shows the effect of the width of stomata (stomatal aperture) on the rate of transpiration under two different conditions.



- Use data from the graph to compare the rate of transpiration in still air and in wind.
- Explain why there is a difference in the transpiration rate in these two conditions.