

# What to Do

## You will need:

- two or three different dictionaries
- a thesaurus
- an atlas.



## Now:

- choose a face
- when you see your face, you are the leader
- when you are the leader, it's your job to get everyone talking about the page.

## 1. Predict

Say to your group:

*"I predict that this page is going to be about..."*

You can use these things to help you predict:

- photographs
- captions
- headings
- what you already know.

Now all of the group should read the page silently.

## 2. Clarify

When you have all finished reading, find out if the group need to clarify the meaning of anything they have read or any particular words.

Say: *“Is there anything we need to clarify?”*

Encourage your group to:

- use a dictionary to look up unknown words
- compare definitions in two or three dictionaries and a thesaurus to find the best meaning for the word in the text
- look up places in an atlas.

## 3. Ask Questions

Lead your group in a discussion about what they have read.

Say: *“Does anyone have a question they would like to put to the group?”*

Encourage your group to talk about what they have found interesting or puzzling. Challenge them to create questions about the text.

You could ask: who..., what..., where..., when..., why..., how... or what if...



If there is a stop sign on your page, ask the question and encourage everyone in the group to say something.

## 4. Summarise

After discussion, outline the main points of what you have read.

Remember to refer to comments from other members of the group and things that you have looked up.

Say: *“My summary of what we have read is...”*

# Animal Crime Sleuths



I predict that this page is going to be about...

Animal crime sleuths, or wildlife detectives, are like police detectives in several ways. Police detectives are police officers who investigate crimes against people. They sort through evidence to solve crimes. Wildlife detectives also sort through evidence – they just do so to solve crimes against animals.

There are many different ways people commit crimes against animals, such as buying or selling endangered animals or products made from them.

If a crime against an animal happens, wildlife detectives examine clues to link together the suspects, the victim and the crime scene.

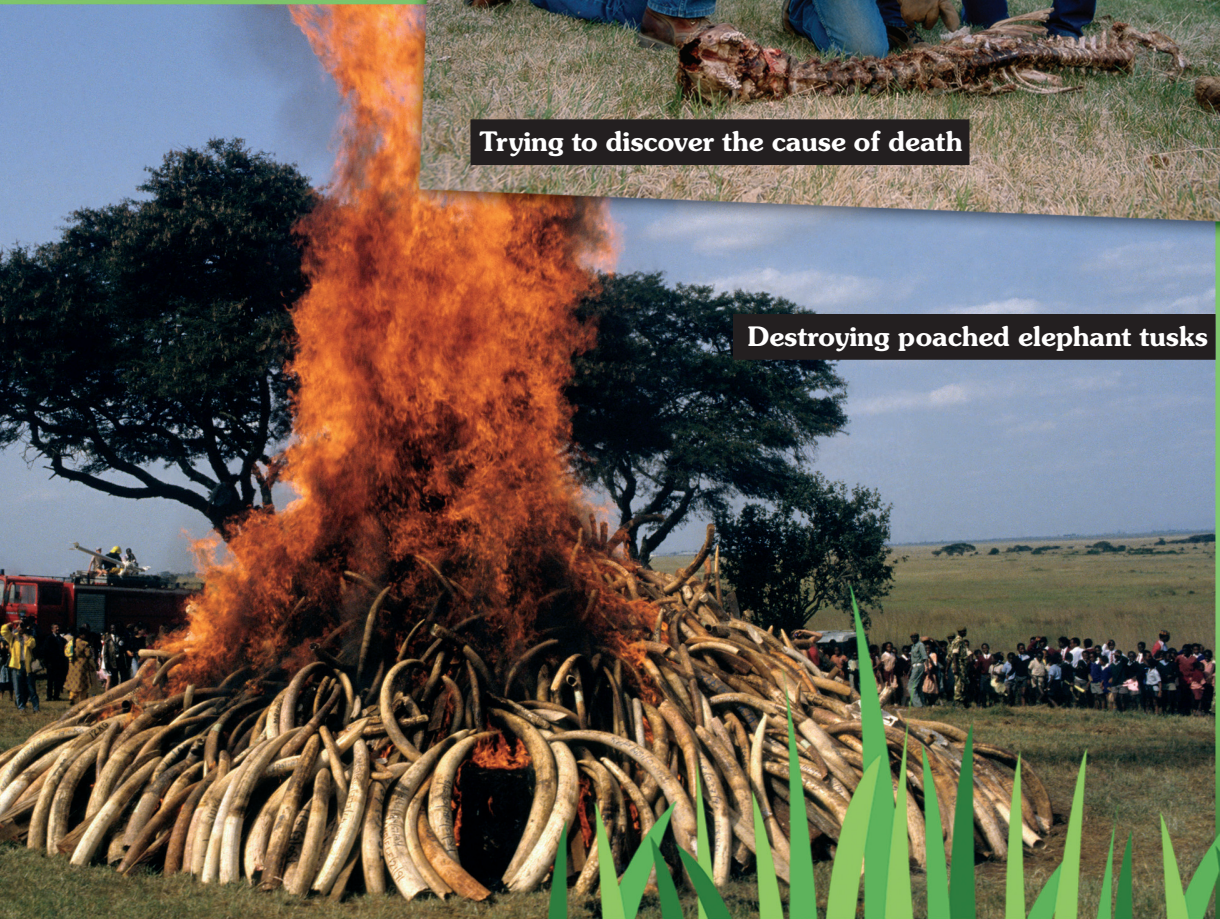


Is there anything we need to clarify?





Trying to discover the cause of death



Destroying poached elephant tusks



Does anyone have a question they would like to put to the group?



My summary of what we have read is...