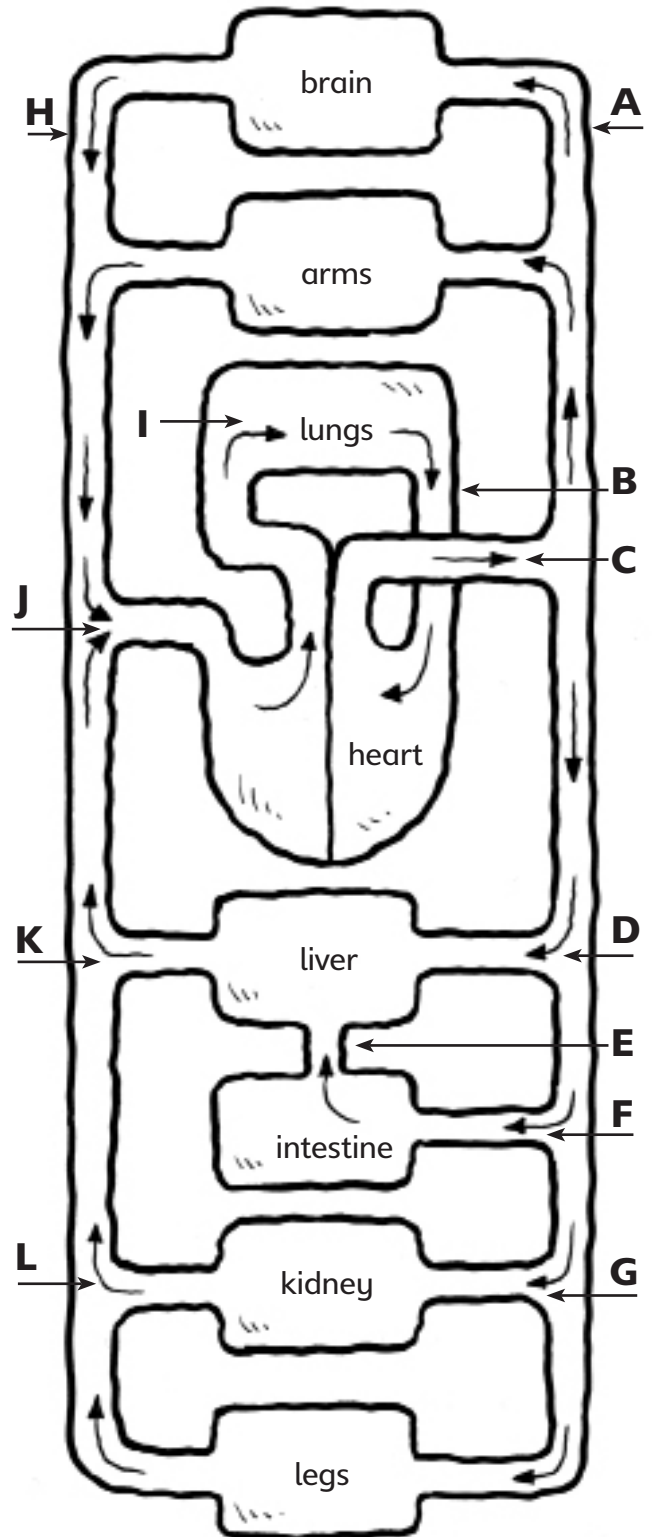


## The circulation of the human body

■ Match the artery or vein described below to the diagram. Fill in the correct letter in each box.

- aorta – takes blood from the heart to the organs
- pulmonary artery – takes blood from the heart to the lungs
- jugular vein – takes blood from brain towards the heart
- renal artery – takes blood to the kidneys
- hepatic vein – takes blood from the liver towards the heart
- vena cava – takes blood from many organs into the heart
- pulmonary vein – takes blood from the lungs to the heart
- mesenteric artery – takes blood to the intestines
- hepatic portal vein – takes blood from the intestines to the liver
- renal vein – takes blood away from the kidney towards the heart
- carotid artery – takes blood towards the brain
- hepatic artery – takes blood towards the liver



I can identify different blood vessels in the human body.

How did you do?