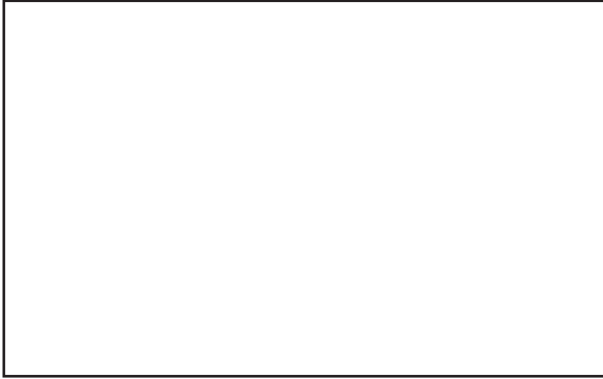
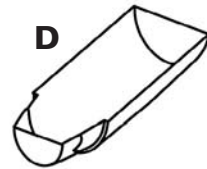
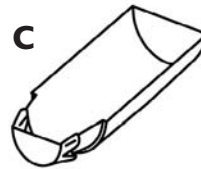
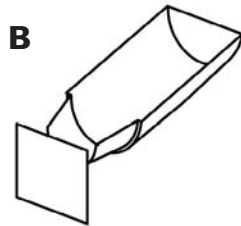


Theme 3 Testing sails

1. Cut out the three sails.

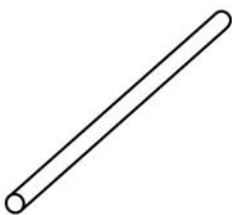


2. Fix the foil to the front of the hull to make a bow.

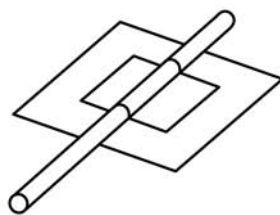


3. Make the mast and assemble your ship.

A. Cut the straws to make four masts 10cm long.



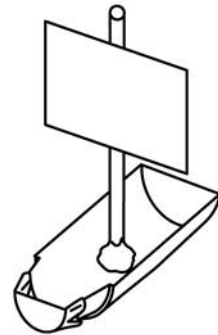
B. Stick each sail to a mast.



C. Put a small lump of plasticine on the base of each mast.



D. Attach the mast to the hull.



How well did it sail?

<p>no sail</p>	<p>small sail</p>	<p>medium sc</p>	<p>large sail</p>
----------------	-------------------	------------------	-------------------